



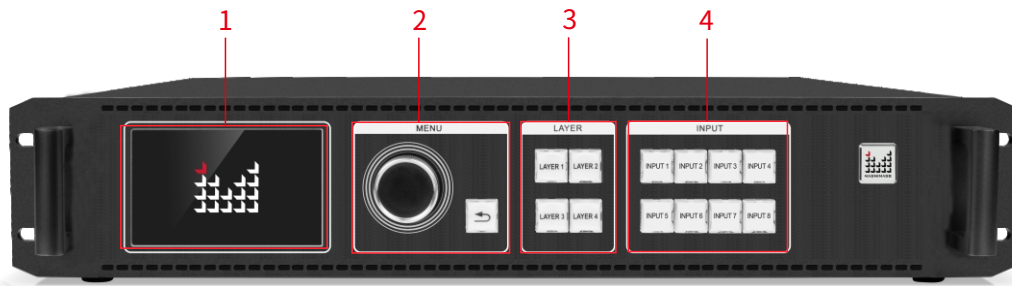
LED-F712 is a video controller that integrates video processor and sending card function. It has a variety of video image input interfaces, including HDMI2.0*1, DP1.2*1, Audio*1, and can extend 3G SDI*1/DVI*2 or HDMI2.0+DP1.2. The output supports 12 ports of gigabit Ethernet, 2 ports of 10G fiber input/output (used for Ethernet backup between 2 machines), HDMI LOOP*1, HDMI*1 (monitor). The standard loading capability is 10.4M pixels, maximum width can be 8192 and maximum height can be 3840. It supports bandwidth expanding technique, the loading capability of single port can reach 1M pixels (60Hz) after switched on the function, maximum loading 16M (60Hz).

LED-F712 support the function of quick light-up screen without computer software connection, greatly simplify the setting steps.

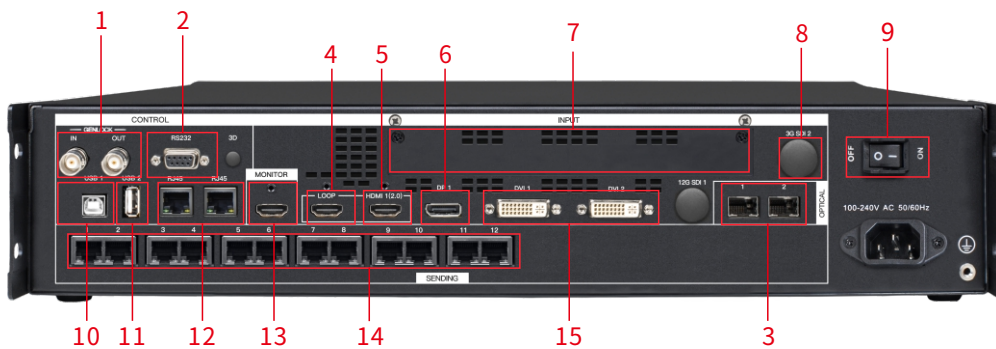
▮ Features

- ▮ Quick light-up screen, no need computer software connection
- ▮ 12 channels gigabit Ethernet output, support customized output resolution
- ▮ Input EDID management
- ▮ Support 4K*2K/60Hz (HDMI 2.0) or 8K*1K/60Hz (DP1.2) input
- ▮ 4 layers display
- ▮ Support bandwidth expanding technique
- ▮ Support serial number calibration for receiving card
- ▮ Support Template Save and Load
- ▮ Support Multi-input mosaic for one machine and multi-machines
- ▮ Support Lan port backup for one machine and multi-machines
- ▮ Support input hot backup
- ▮ Support seamless switch between input signal and preset
- ▮ Support scrolling caption
- ▮ Support USB configuration file read and load
- ▮ Lan port controlling with loop port
- ▮ Support Input/output customized resolution
- ▮ Support Image zoom and crop
- ▮ Support Monitoring output
- ▮ Support Senior cabling
- ▮ Free cabling
- ▮ Support smart mark number
- ▮ Optic port backup
- ▮ Support Audio input
- ▮ Support RS232 control, Command control
- ▮ Support Time task function, timing brightness
- ▮ Support Magnimage C-link series receiving card

Controller Introduction



- 1 LCD display with menu information 2 Rotate button/Return button 3 Layer selection button 4 Input signal selection button

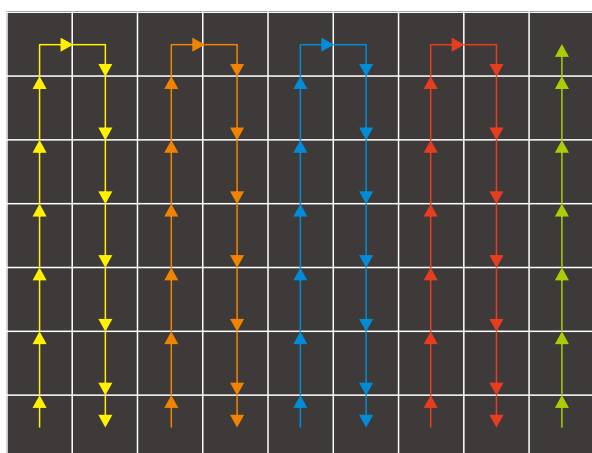


- 1 Genlock Input/Output 2 RS232 control port 3 2 Channel 10G Optic ports 4 HDMI loop out
 5 HDMI2.0 Input 6 DP1.2 Input 7 DVI*2/HDMI2.0+DP1.2 extend port 8 3G SDI extend port
 9 Power Switch 10 USB control Port 11 USB port for load file/ Upgrade 12 2 Ethernet Ports
 13 HDMI monitoring output 14 10 channel gigabit Ethernet output 15 2 DVI input ports

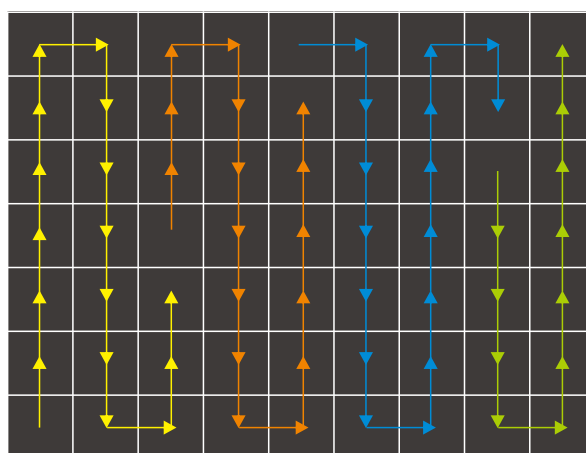
▮ Main Feature and Applications

▮ Free Cabling

Blank cabling doesn't occupy the pixel capability of each lan port, no need rectangle cabling, improved the utilization rate of Ethernet loading capability, help to save use cost.



Normal



Free Cabling

▮ Large Pixel Capability

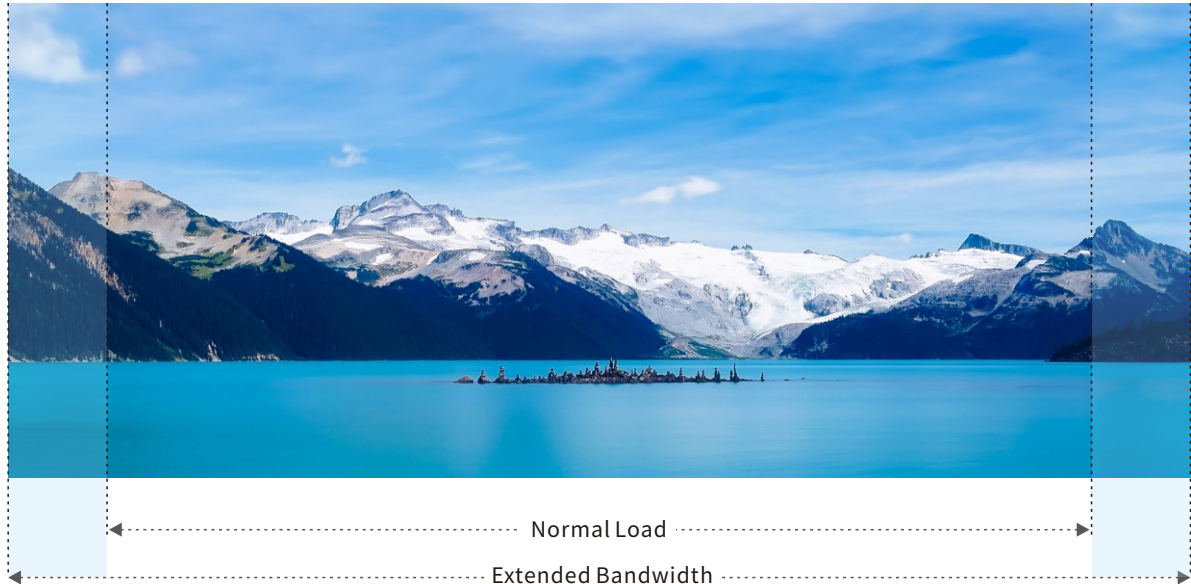
Maximum load 12M pixel (standard load 10.4M pixel), Max. Width 8192, Max. Height 3840. Support customized



▮ Main Feature and Applications

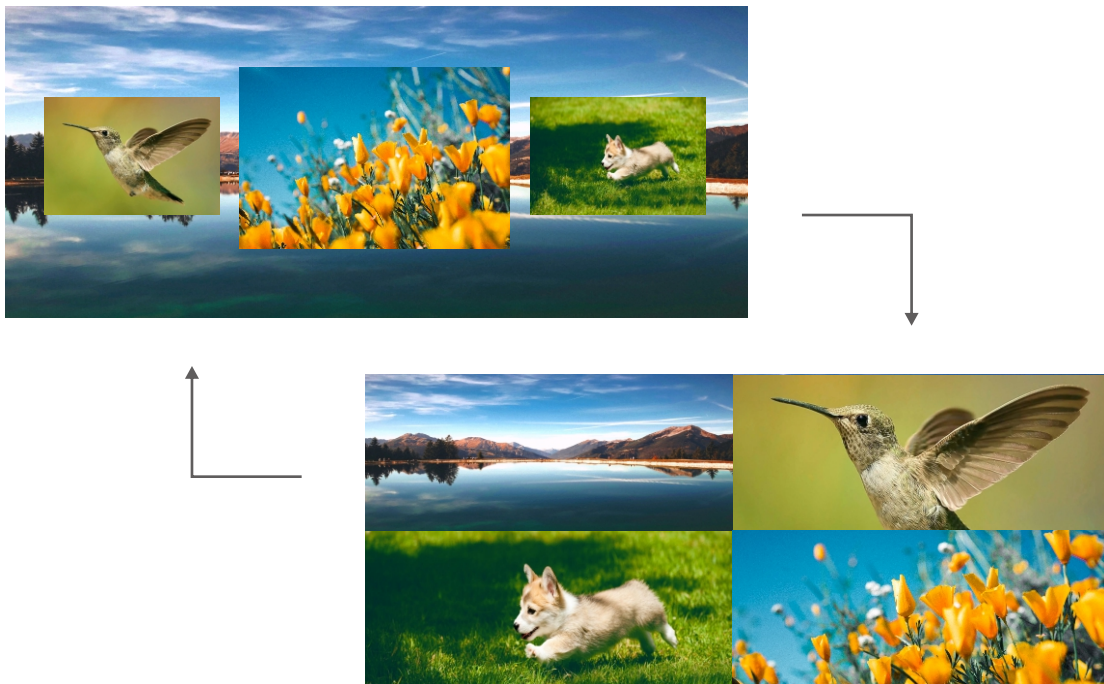
▮ bandwidth expanding

With unique bandwidth expanding technique, single port can load up to 1M px(60Hz).



▮ Four layers seamless switching

4 Independent layers, free adjustment, seamless switch among input sources, also support 4 layer to 4 layer switch in presets. Layer 3 and Layer4 support interlaced processing.



▮ Main Feature and Applications

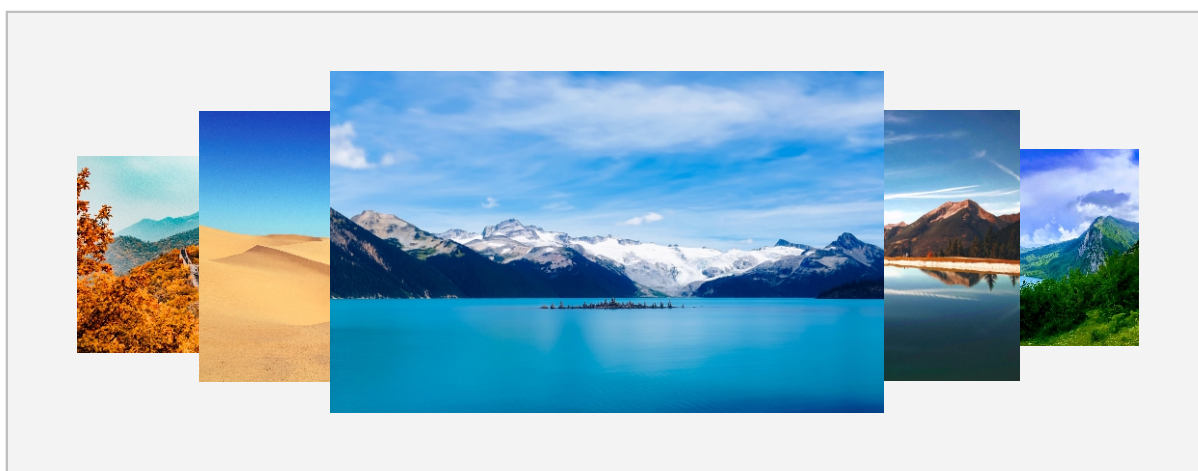
📺 Monitoring output

Real-time monitoring screen display information through external 2K monitor.



📺 Time Task Function

Auto switch the preset according to time task setting.



▮ Main Feature and Applications

📺 Timing Brightness Adjustment

Auto timing brightness adjustment at set time.

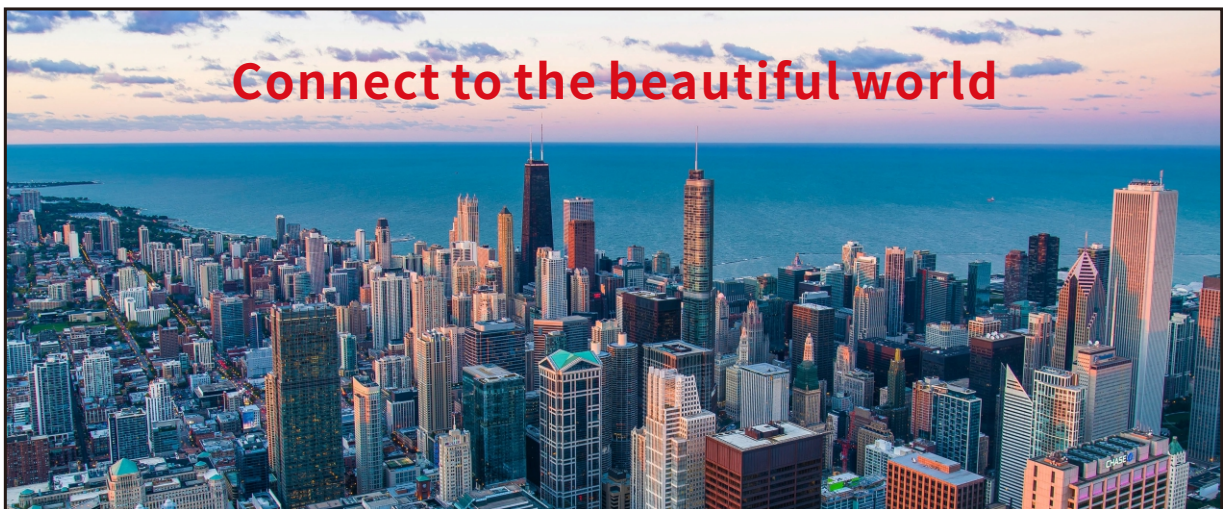


Auto Brightness Adjustment



📺 Scrolling Text

Text size/color/scroolling speed/background color can be adjusted by software.



Technical parameters

| Model | |
|------------|--|
| Model | Specification |
| LED-F712 | Standard mode |
| LED-F712D | Standard model+2*DVI input |
| LED-F712H | Standard model+ 1 extend HDMI2.0+DP1.2 input |
| LED-F712S | Standard model+1*3G SDI input |
| LED-F712DS | Standard model+2*DVI input + 1* 3G SDI input |

| Input specification | | |
|---------------------|----------|---|
| Port | Quantity | Resolution Specification |
| HDMI2.0 | 1 | 3840X2160/60Hz and Customized |
| DVI | 4 | 3840X1080/60Hz and Customized |
| 3G SDI (Option) | 1 | 480i、720P、1080i/60Hz、1080P/60Hz3GSDI Standard |
| DP1.2 | 1 | 7680X1080/60Hz、3840X2160/60Hz and Customized |
| Genlock (In) | 1 | |

| Output specification | | |
|---|----------|--|
| Port | Quantity | Resolution Specification |
| Lan port (for receiving card connection) | 12 | Normal load 0.65M per Lan port, total 7.8M Max. Total load can reach 12M after Bandwidth expanding, max. Width 8192 pixel, max. Height 3840 pixel |
| HDMI LOOP | 1 | HDMI loop out, copy HDMI2.0 input |
| HDMI Monitor | 1 | Monitoring output, 1920x1080/60Hz |
| OPT | 2 | 10G |
| Genlock (Out) | 1 | |

| Control Port | | |
|--------------|----------|--|
| Type | Quantity | |
| USB | 1 | For PC control by software |
| RJ45 | 2 | For PC control by software or Multipls cascade control |
| RS232 | 1 | For RS232 control |

| Machine Specification | |
|-----------------------|---------------------|
| Input Power Voltage | 100-240V AC 50/60HZ |
| Power Consumption | 80W |
| Dimension(L*W*H) | 482.6X421.3X44mm |
| Weight | 7.6KG |



Shenzhen Magnimage Technology Co., Ltd.

Address: 8F, Bld. F5, TCL International E City, #1001
 Zhongshan Park Road, Nanshan, Shenzhen, China, 518052
 Tel: 0755-8664 7651 Fax: 0755-8664 7650
 Website: www.magnimage.com

24h 86-400-6868-203