



LED-S200

Sending card



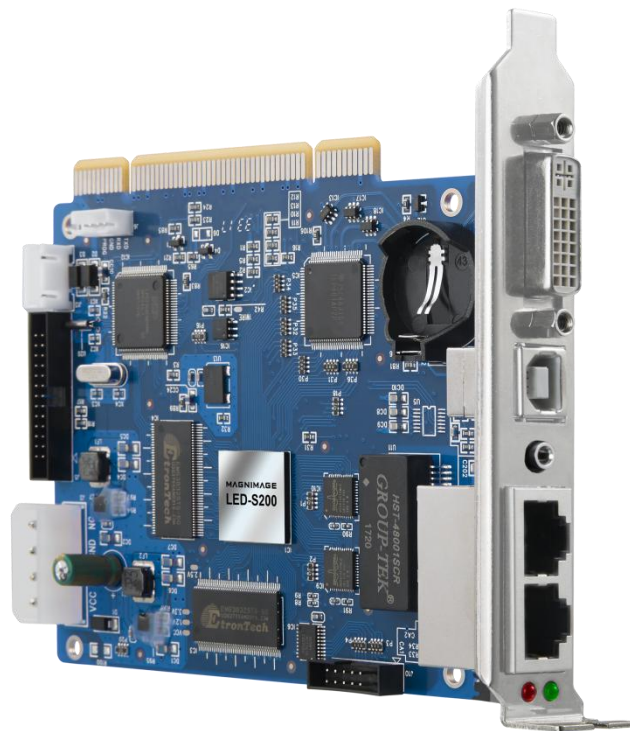
Product Specification

V1.0

LED-S200

● Product Description

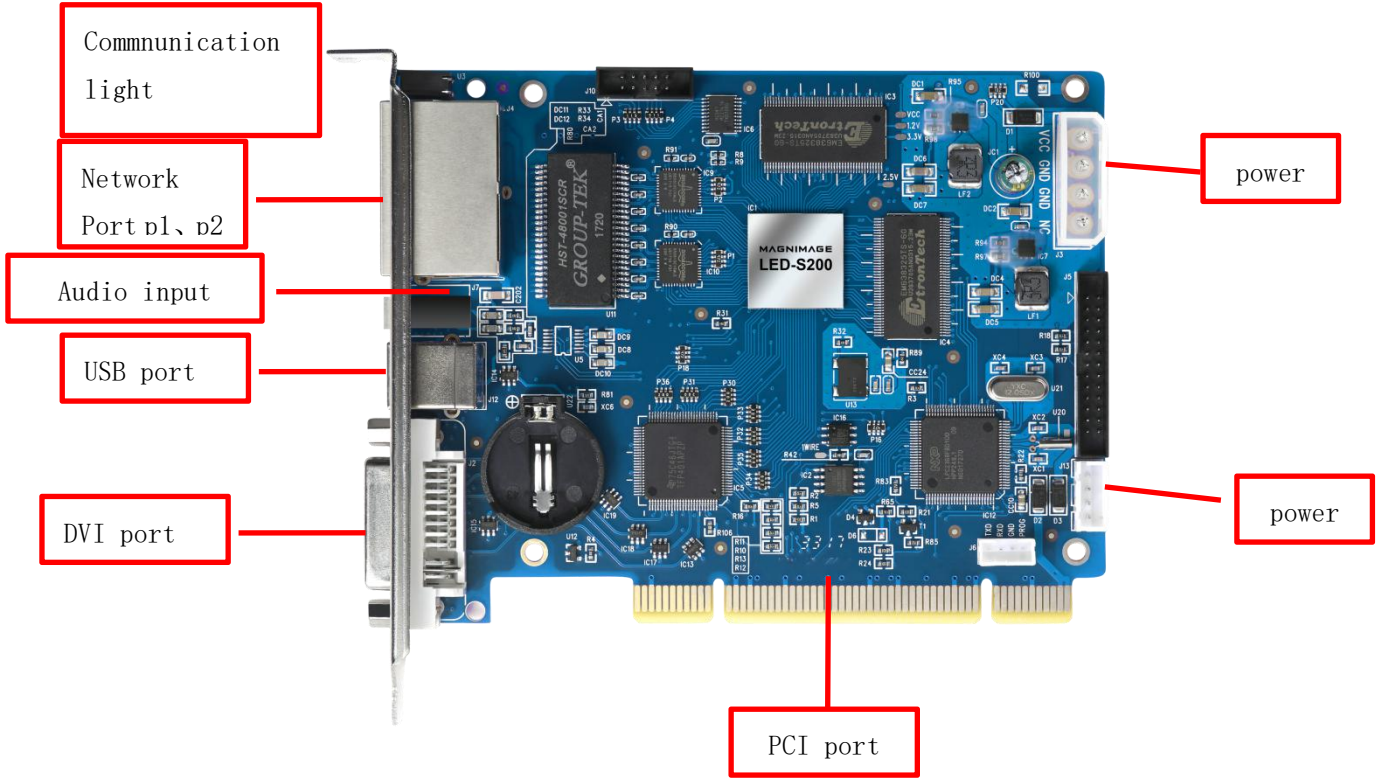
LED-S200 is the basic series sending card which developed by Magnimage, a single port can loading up to 650,000 pixels, total loading capacity up to 1,300.000 pixels. Support Magnimage receiving card: LED-M8S,LED-M12S,LED-M16S,LED-M28S,LED-M52S,LED-M62S , used with CLINK software.



● Features

1. DVI video input × 1
2. Audio input × 1
3. Dual network port output
4. USB port communicate , multiple sending cards can be cascaded on the same PC.
5. Support various resolution :
1024×768,280×1024,1366×768,1600×1200,1920×1080,2048×1152,2560×960 and input resolution customized, the Max. Width 4096, Max. Height 4096.
6. Single sending card loading up to 1,300.000 pixels. Single port loading 650,000 pixels, support loading capacity expansion function, after turned on the function,the single port can loading up to 1,000.000 pixels and a single sending card can loading up to 2,000.000 pixels.
7. Support free cable-connection , each signal cable can loading the actual number of the pixels,folding or empty space do not take up the capacity.
8. Support to control receiving card :
LED-M8S,LED-M12S,LED-M16S,LED-M28S,LED-M52S,LED-M62S

● Structure Description

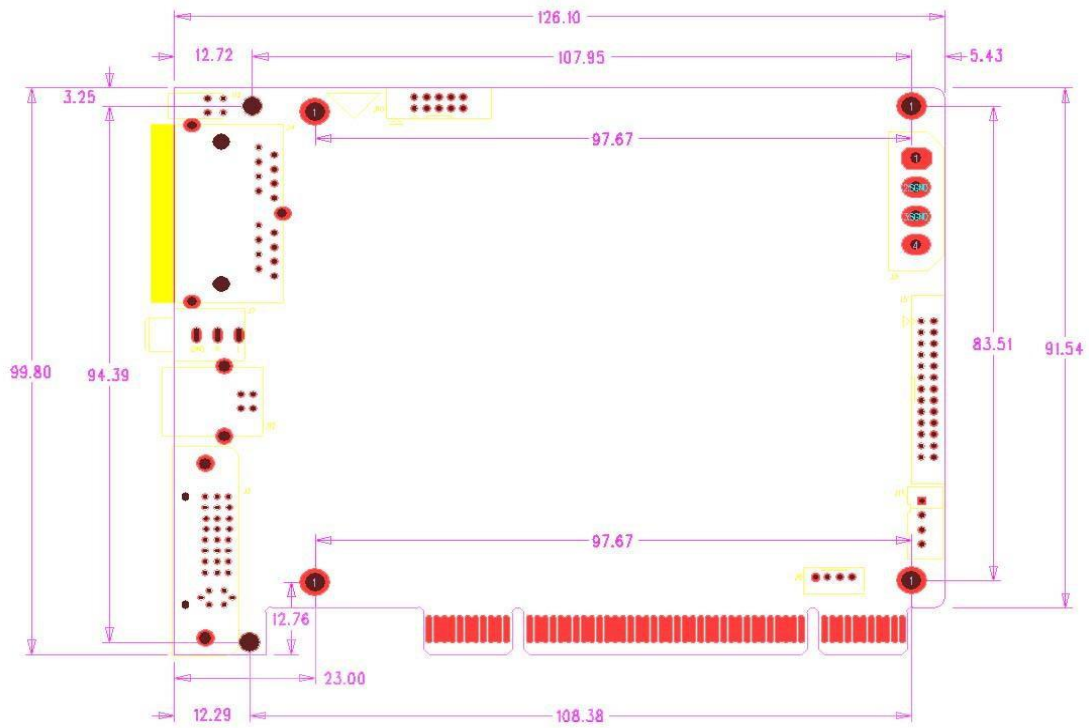


Notes:	
Communication light	Network port communication light. Green light flashing means normal communication, green light is always on means disconnected, red light is power indicator light, always light means power supply is normal.
Network port P1/P2	Dual network port output
DVI	DVI video input interface

USB	Square USB ,USB communication port to connect PC
Audio port	Audio input port

Input indication	
Port	Resolution specification
DVI	VESA standard, support EDID
Specification	
Power Consumption	3W
Working Voltage	DC3.5-5.5V
Working Temperature	-20°C -60°C
Working Humidity	10%RH-90%RH
Net Weight	120g

Product Dimension (unit: mm)



● **Note**

- (1) The installation process should be completed by professionals.
- (2) It must be anti-static.
- (3) Need to keep waterproof and dust-proof.

24h 400-6868-203

Shenzhen Magnimage Technology Co., Ltd.

Address: 8F, Bld. F5, TCL International E City, #1001
Zhongshan Park Road, Nanshan, Shenzhen, China, 518052

Tel: 0755-86647651 Fax: 0755-86647650

Website: www.magnimage.com

